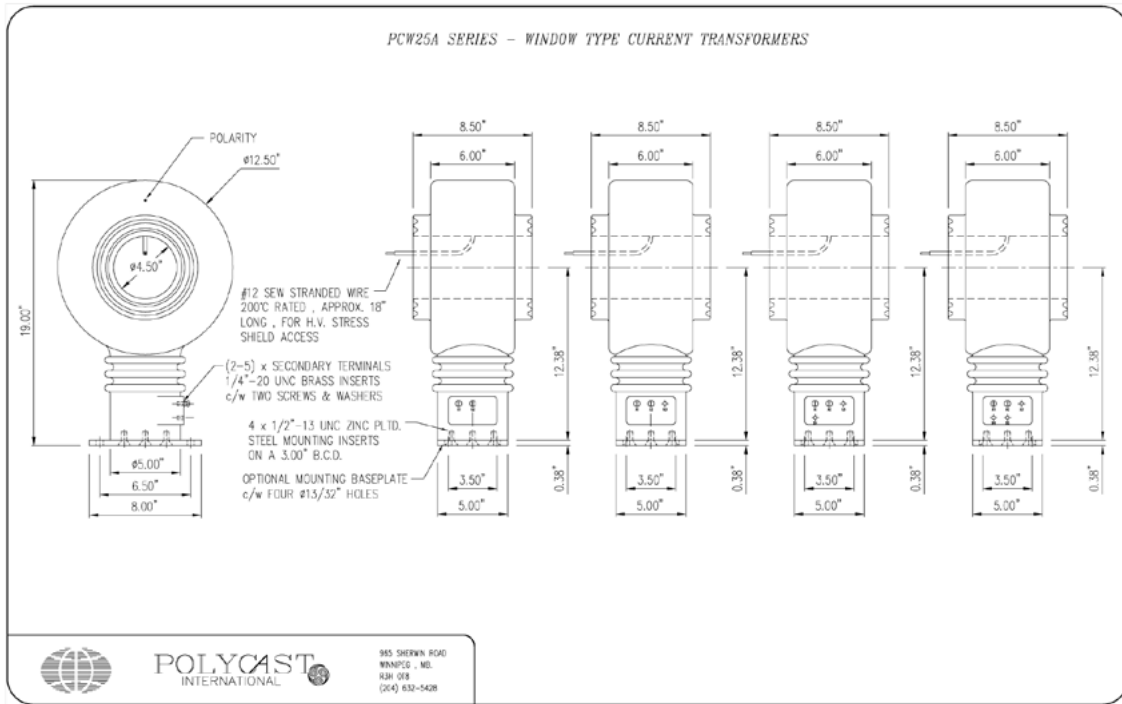


# Current Transformers

## PCW25A1 Series - Outline Details

Indoor, Shielded Window Type, Side Terminals, 125kV BIL



### Ratings and Performance Data

Voltage Class - 25kV      Frequency - 60Hz      Impulse (BIL) - 125kV      Hipot - 60kV  
 Thermal withstand (1 sec) - 100xN      Mechanical withstand (1 sec) - 250xN  
 Continuous current rating factor (CCRF) - **Minimum:** 1.33 @ 30C, 1.0 @ 55C  
 Metering and/or relaying accuracy units available to ANSI C57.13, CSA Can3-C13 or IEC 185  
 Revenue Billing Approval available on some models and ratios.

### Style Numbers

### PCW25A1 - Series with Side Terminals

SINGLE RATIO		DUAL RATIO		MULTI RATIO		ACCURACY		
RATIO (AMPS)	STYLE NUMBER	RATIO (AMPS)	STYLE NUMBER	RATIO (AMPS)	STYLE NUMBER	METERING CSA /ANSI	RELAYING CSA    ANSI	
						<b>0.3</b> <b>0.6</b>		
50-5	134-002-01	-	-	-	-	-	10L10	C10
100-5	134-002-03	100/50-5	134-003-31	-	-	-	10L20	C20
150-5	134-002-04	-	-	-	-	-	10L40	C40
200-5	134-002-05	200/100-5	134-003-32	-	-	-	10L50	C50
300-5	134-002-07	300/150-5	134-003-33	-	-	B0.1   B0.2	2.5L50	C50
400-5	134-002-08	400/200-5	134-003-34	-	-	B0.2   B0.5	2.5L50	C50
500-5	134-002-09	500/250-5	134-003-42	-	-	B0.2   B0.5	10L100	C100
600-5	134-002-10	600/300-5	134-003-35	600/400/100-5	134-004-70	B0.9   B1.8	2.5L100	C100
				600/400/150/100-5	134-005-74	B0.9   B1.8	2.5L100	C100
800-5	134-002-11	800/400-5	134-003-36	-	-	B0.9   B1.8	2.5L200	C200
1000-5	134-002-12	1000/500-5	134-003-49	-	-	0.3 Thru B1.8	2.5L200	C200
1200-5	134-002-13	1200/600-5	134-003-37	1200/800/200-5	134-004-71	0.3 Thru B1.8	2.5L400	C400
				1200/800/300/200-5	134-005-75	0.3 Thru B1.8	2.5L400	C400
1500-5	134-002-14	1500/750-5	134-003-60	-	-	0.3 Thru B1.8	2.5L400	C400
1600-5	134-002-15	1600/800-5	134-003-59	-	-	0.3 Thru B1.8	2.5L400	C400
2000-5	134-002-16	2000/1000-5	134-003-38	2000/1500/1200/400-5	134-005-72	0.3 Thru B1.8	2.5L400	C400
3000-5	134-002-18	3000/1500-5	134-003-39	3000/2500/2200/1000-5	134-005-73	0.3 Thru B1.8	2.5L400	C400
4000-5	134-002-20	4000/2000-5	134-003-40	4000/3000/2000/500-5	134-005-76	0.3 Thru B1.8	2.5L400	C400
5000-5	134-002-24	5000/2500-5	134-003-61	5000/4000/2000/1500-5	134-005-77	0.3 Thru B1.8	2.5L800	C800
6000-5	134-002-26	6000/3000-5	134-003-62	-	-	0.3 Thru B1.8	2.5L800	C800

Style Number 134-00N-00 units have a quantity 'N' Terminals on the side of the casting.



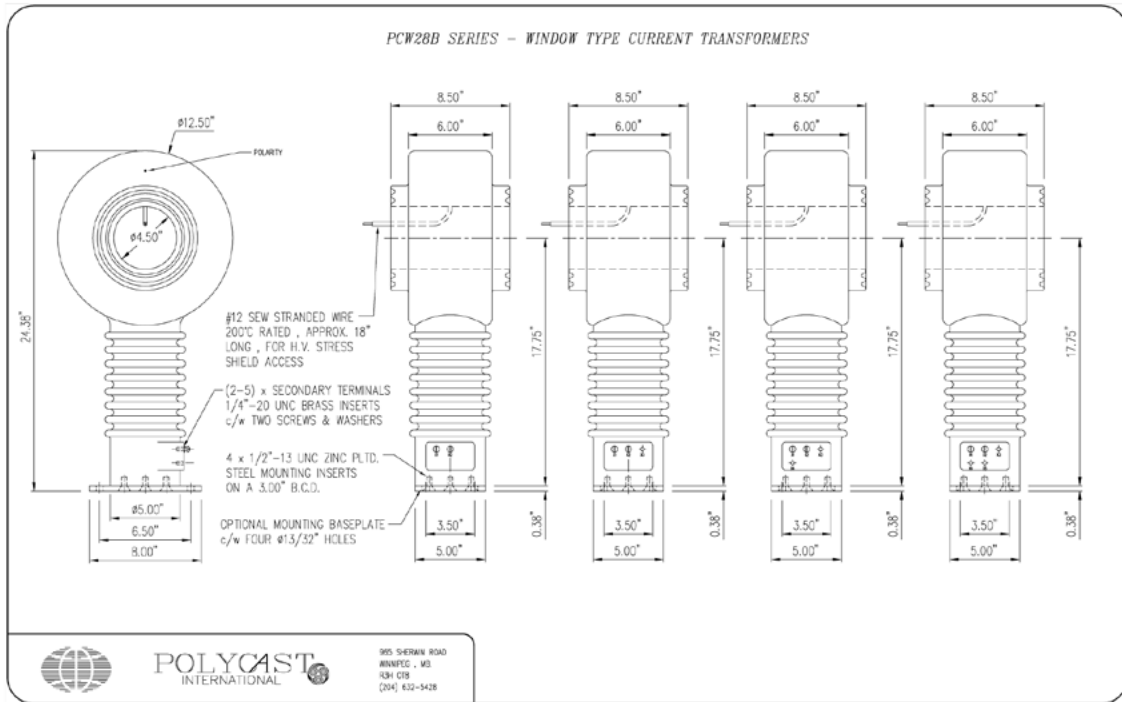
Polycast International  
 965 Sherwin Road  
 Winnipeg, Manitoba  
 Canada R3H 0T8

T (204) 632 5428  
 F (204) 697 0314  
 Toll-free 1 800 665 7445  
 www.polycast.ca

# Current Transformers

## PCW228B1 Series - Outline Details

Indoor, Shielded Window Type, Side Terminals, 150kV BIL



### Ratings and Performance Data

Voltage Class - 28kV    Frequency - 60Hz    Impulse (BIL) - 150kV    Hipot - 70kV  
 Thermal withstand (1 sec) - 100xN    Mechanical withstand (1 sec) - 250xN  
 Continuous current rating factor (CCRF) - *Minimum*: 1.33 @ 30C, 1.0 @ 55C  
 Metering and/or relaying accuracy units available to ANSI C57.13, CSA Can3-C13 or IEC 185  
 Revenue Billing Approval available on some models and ratios.

#### Style Numbers

#### PCW228B1 - Series

#### with Side Terminals

SINGLE RATIO		DUAL RATIO		MULTI RATIO		ACCURACY			
RATIO (AMPS)	STYLE NUMBER	RATIO (AMPS)	STYLE NUMBER	RATIO (AMPS)	STYLE NUMBER	METERING CSA /ANSI 0.3    0.6		RELAYING CSA    ANSI	
50-5	134-102-01	-	-	-	-	-	-	10L10	C10
100-5	134-102-03	100/50-5	134-103-31	-	-	-	-	10L20	C20
150-5	134-102-04	-	-	-	-	-	-	10L40	C40
200-5	134-102-05	200/100-5	134-103-32	-	-	-	B0.1	10L50	C50
300-5	134-102-07	300/150-5	134-103-33	-	-	B0.1	B0.2	2.5L50	C50
400-5	134-102-08	400/200-5	134-103-34	-	-	B0.2	B0.5	2.5L50	C50
500-5	134-102-09	500/250-5	134-103-42	-	-	B0.2	B0.5	10L100	C100
600-5	134-102-10	600/300-5	134-103-35	600/400/100-5	134-104-70	B0.9	B1.8	2.5L100	C100
				600/400/150/100-5	134-105-74	B0.9	B1.8	2.5L100	C100
800-5	134-102-11	800/400-5	134-103-36	-	-	B0.9	B1.8	2.5L200	C200
1000-5	134-102-12	1000/500-5	134-103-49	-	-	0.3 Thru B1.8	-	2.5L200	C200
1200-5	134-102-13	1200/600-5	134-103-37	1200/800/200-5	134-104-71	0.3 Thru B1.8	-	2.5L400	C400
				1200/800/300/200-5	134-105-75	0.3 Thru B1.8	-	2.5L400	C400
1500-5	134-102-14	1500/750-5	134-103-60	-	-	0.3 Thru B1.8	-	2.5L400	C400
1600-5	134-102-15	1600/800-5	134-103-59	-	-	0.3 Thru B1.8	-	2.5L400	C400
2000-5	134-102-16	2000/1000-5	134-103-38	2000/1500/1200/400-5	134-105-72	0.3 Thru B1.8	-	2.5L400	C400
3000-5	134-102-18	3000/1500-5	134-103-39	3000/2500/2200/1000-5	134-105-73	0.3 Thru B1.8	-	2.5L400	C400
4000-5	134-102-20	4000/2000-5	134-103-40	4000/3000/2000/500-5	134-105-76	0.3 Thru B1.8	-	2.5L400	C400
5000-5	134-102-24	5000/2500-5	134-103-61	5000/4000/2000/1500-5	134-105-77	0.3 Thru B1.8	-	2.5L800	C800
6000-5	134-102-26	6000/3000-5	134-103-62	-	-	0.3 Thru B1.8	-	2.5L800	C800

Style Number 134-10N -00 units have a quantity 'N' Terminals on the side of the casting.



Polycast International  
 965 Sherwin Road  
 Winnipeg, Manitoba  
 Canada R3H 0T8

T (204) 632 5428  
 F (204) 697 0314  
 Toll-free 1 800 665 7445  
 www.polycast.ca