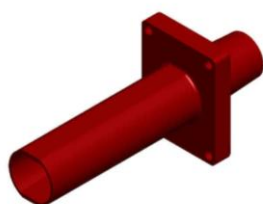


Switchgear Bushings

Breaker, Primary Disconnect Bushings Indoor to 170 kV BIL, 3000 A

Polycast custom manufactures various styles of breaker, spout and primary disconnect bushings for switchgear and power apparatus applications. Designs are available for voltage ratings up to 38 kV/170 kV BIL, with amperage ratings up to 3,000 Amps. Various styles have been developed and adapted for applications for leading switchgear manufacturers. Polycast can provide complete design and engineering services to custom manufacture a bushing design to virtually any requirement and environment.

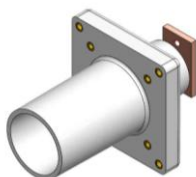
Sample Styles



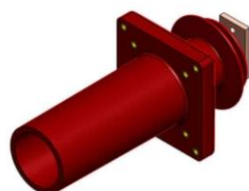
Model A



Model B



Model C



Model D



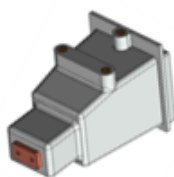
Model E



Model F



Model G



Model H

Applications:

- Air to air for switchgear, breaker and power apparatus
- Voltage ratings of 5kV through 38kV
- Current ratings up to 3000A

Construction & Options:

- Custom designed to meet specific requirements – designs completed for leading switchgear manufacturers - ABB, Schneider, Toshiba, Siemens, and Eaton
- Material options available:
 - Bisphenol-A epoxy - not exposed to UV and for use in lightly polluted environments; rated from -5°C to 120°C
 - Cycloaliphatic epoxy - suitable for UV exposure in moderate to highly polluted environments; rated from -50°C to 120°C
- Various body lengths and mounting inserts configurations available
- Various lengths of capacitance graded internal ground shields for control of electric field distribution available
- Special copper terminations available - including electrolytic copper studs, connectors and bars – with silver, tin or no plating
- Designed and tested to meet ANSI, IEC and CSA switchgear assembly standards

Polycast will custom design and manufacture a Breaker, Spout or Primary Disconnect Bushing to meet your exact requirements