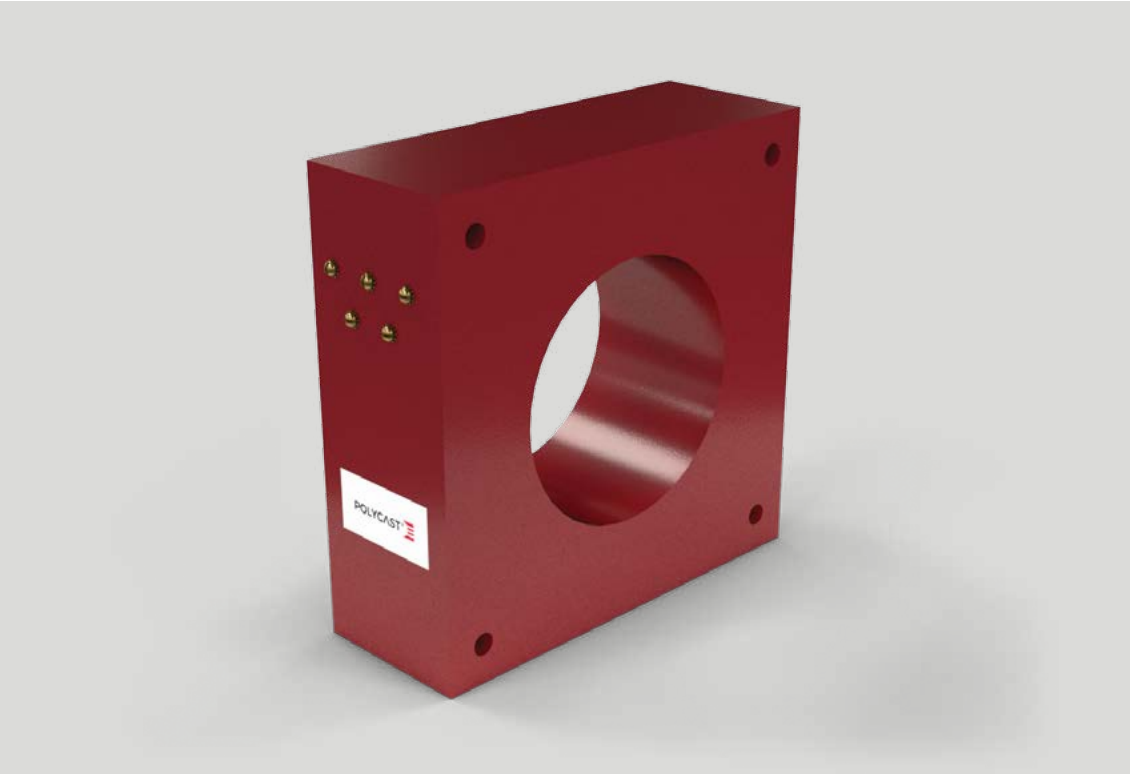





LOW-VOLTAGE CAST CURRENT TRANSFORMER



INSTRUCTIONS

Fill out the forms on this page and the next to customize your product. Icons and arrows in **red** indicate a customizable part of the product:

-  **Define dimension**
Enter the indicated dimension to the left of this icon. When applicable, the dimension will also be updated in the product schematic.
-  **Select option**
Select *one* of the indicated options. In some cases, you will also need to define a dimension for that selection.
-  **Select option(s)**
Select *one or more* of the indicated options.

HOW TO SUBMIT THIS FORM

Once you've finished customizing your product, submit this template to Polycast so we can start talking about making your design a reality:

Email sales@polycast.ca
Save the finished form to your computer and attach it in an email to the address above. Or, click the SUBMIT button at the bottom of this page.


Fax 1 (204) 697-0314


Give us a call to talk about your specific needs and how we can achieve them:

Phone 1 (204) 632-5428 **Toll-free** 1 (800) 665-7445

CONTACT INFORMATION

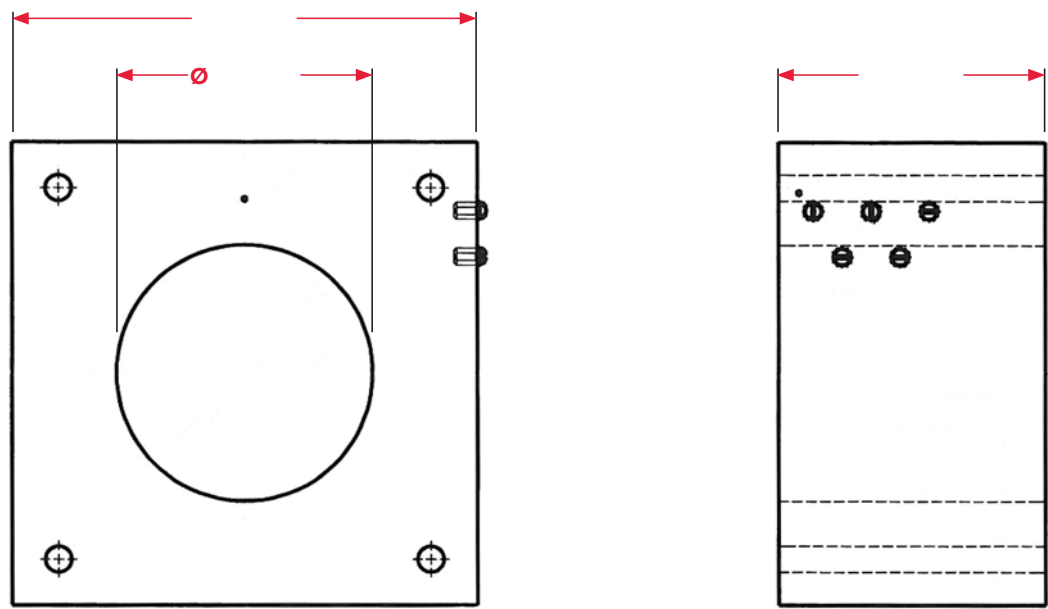
Name	
Province/State	
Country	
Email address	
Phone number	
Fax	
Company name	

Your message	
--------------	---

Additional Instructions	
-------------------------	---

SUBMIT →

LOW-VOLTAGE CAST CURRENT TRANSFORMER



Square form factor
shown here

SPECIFICATIONS

Voltage class		Inside diameter		Width		Application	
Ratio		Outside form factor		Body material		Low temperature BELOW -5° C	
Accuracy		Square		Indoor, BIS-A epoxy, Red		High pollution	
Continuous current rating factor		Octagonal		Outdoor, Cycloaliphotic epoxy, Grey			
Test standard		Outside dimension					