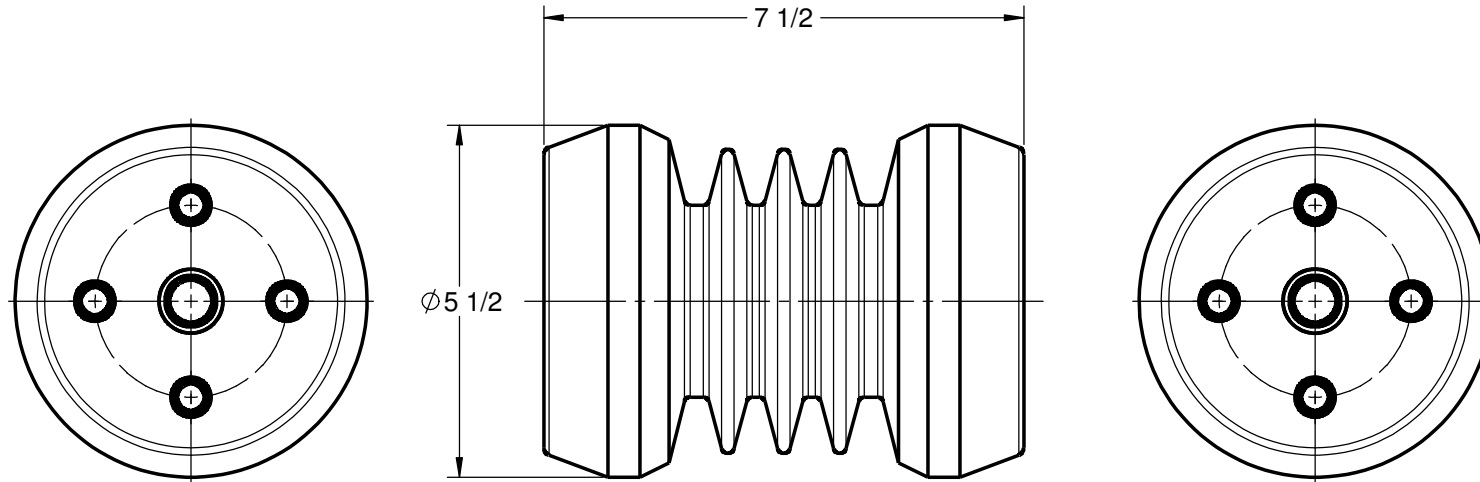


**GENERAL NOTES AND SPECIFICATIONS**

1. BASIC IMPULSE LEVEL: 110 kV
2. BODY MATERIAL: OUTDOOR CYCLOALIPHATIC EPOXY, GREY
3. INSERT MATERIAL: ZINC PLATED STEEL
4. WEIGHT: 9 lb(s)



**COMMON OPTIONS**

CHOOSE TOP AND BOTTOM MOUNTING CONFIGURATION FROM TABLE BELOW  
OTHER MOUNTING CONFIGURATIONS ARE ALSO AVAILABLE UPON REQUEST

SERIES ITEM	CONFIG
100-318-01	A8A8
100-318-02	A8B2
100-318-03	B2B2
100-318-04	B2B3
100-318-05	B2B6
100-318-06	B4B4
100-318-07	B4B5
100-318-08	B6B6
100-318-09	B7B7
100-318-10	A8B6
100-318-11	A8B8
100-318-12	B4B6
100-318-13	A1A1

**STANDARD MOUNTING INSERT CONFIGURATION**

<b>A1</b>  1X 1/2-13 UNC $\nabla$ 3/4	<b>A8</b>  1X 3/4-10 UNC $\nabla$ 7/8	<b>A9</b>  1X 5/8-11 UNC $\nabla$ 7/8	<b>B2</b>  $\phi$ 3 BCD 2X 1/2-13 UNC $\nabla$ 3/4	<b>B3</b>  $\phi$ 3 BCD 2X 1/2-13 UNC $\nabla$ 3/4	<b>B4</b>  $\phi$ 3 BCD 2X 1/2-13 UNC $\nabla$ 3/4 1X 3/4-10 UNC $\nabla$ 7/8
<b>B5</b>  $\phi$ 3 BCD 2X 1/2-13 UNC $\nabla$ 3/4 1X 3/4-10 UNC $\nabla$ 7/8	<b>B6</b>  $\phi$ 3 BCD 4X 1/2-13 UNC $\nabla$ 3/4	<b>B7</b>  $\phi$ 3 BCD 4X 1/2-13 UNC $\nabla$ 3/4 1X 3/4-10 UNC $\nabla$ 7/8	<b>B8</b>  $\phi$ 3 BCD 2X 5/8-11 UNC $\nabla$ 7/8		

100-318-16	A9A9
100-318-20	A1A6
100-318-21	A8B7
100-318-22	A9B6
100-318-23	B5B7
100-318-24	B5B6
100-318-29	A9B7
100-318-30	A1B2
100-318-31	A1B6
100-318-41	A1B7

**POLYCAST**

486 SHEPPARD ST  
WINNIPEG, MB  
CANADA R2X 2P8  
www.polycast.ca

**CONFIDENTIALITY**

THIS DRAWING ALONG WITH INFORMATION AND RELATED DOCUMENTS MAY NOT BE DUPLICATED OR RELEASED IN WHOLE OR IN PART WITHOUT WRITTEN PERMISSION AND IS THE EXCLUSIVE PROPERTY OF POLYCAST INTERNATIONAL

**PRODUCT SERIES**

**POI30A SERIES - 18kV/110kV BIL INSULATOR**

**SERIES NUMBER**

**100-318-00**