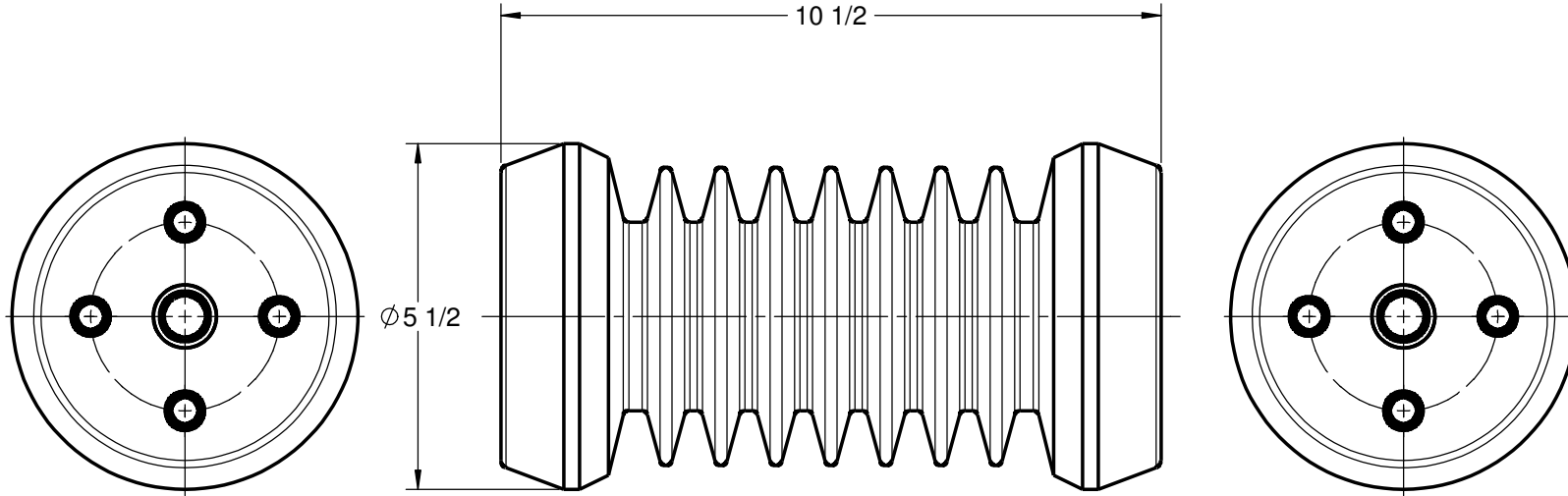


**GENERAL NOTES AND SPECIFICATIONS**

1. BASIC IMPULSE LEVEL: 150 kV
2. BODY MATERIAL: OUTDOOR CYCLOALIPHATIC EPOXY, GREY
3. INSERT MATERIAL: ZINC PLATED STEEL
4. WEIGHT: 10 lb(s)



**COMMON OPTIONS**

CHOOSE TOP AND BOTTOM MOUNTING CONFIGURATION FROM TABLE BELOW  
OTHER MOUNTING CONFIGURATIONS ARE ALSO AVAILABLE UPON REQUEST

| SERIES ITEM | CONFIG |
|-------------|--------|
| 100-328-01  | A8A8   |
| 100-328-02  | A8B2   |
| 100-328-03  | B2B2   |
| 100-328-04  | B2B3   |
| 100-328-05  | B2B6   |
| 100-328-06  | B4B4   |
| 100-328-07  | B4B5   |
| 100-328-08  | B6B6   |
| 100-328-09  | B7B7   |
| 100-328-10  | A8B6   |
| 100-328-11  | A8B8   |
| 100-328-12  | B4B6   |
| 100-328-13  | A1A1   |

**STANDARD MOUNTING INSERT CONFIGURATION**

|                                                                                           |                                                             |                                                                                           |                                                             |                                                             |                                                                                           |
|-------------------------------------------------------------------------------------------|-------------------------------------------------------------|-------------------------------------------------------------------------------------------|-------------------------------------------------------------|-------------------------------------------------------------|-------------------------------------------------------------------------------------------|
| <b>A1</b><br><br>1X 1/2-13 UNC $\nabla$ 3/4                                               | <b>A8</b><br><br>1X 3/4-10 UNC $\nabla$ 7/8                 | <b>A9</b><br><br>1X 5/8-11 UNC $\nabla$ 7/8                                               | <b>B2</b><br><br>$\phi$ 3 BCD<br>2X 1/2-13 UNC $\nabla$ 3/4 | <b>B3</b><br><br>$\phi$ 3 BCD<br>2X 1/2-13 UNC $\nabla$ 3/4 | <b>B4</b><br><br>$\phi$ 3 BCD<br>2X 1/2-13 UNC $\nabla$ 3/4<br>1X 3/4-10 UNC $\nabla$ 7/8 |
| <b>B5</b><br><br>$\phi$ 3 BCD<br>2X 1/2-13 UNC $\nabla$ 3/4<br>1X 3/4-10 UNC $\nabla$ 7/8 | <b>B6</b><br><br>$\phi$ 3 BCD<br>4X 1/2-13 UNC $\nabla$ 3/4 | <b>B7</b><br><br>$\phi$ 3 BCD<br>4X 1/2-13 UNC $\nabla$ 3/4<br>1X 3/4-10 UNC $\nabla$ 7/8 | <b>B8</b><br><br>$\phi$ 3 BCD<br>2X 5/8-11 UNC $\nabla$ 7/8 |                                                             |                                                                                           |

|            |      |
|------------|------|
| 100-328-16 | A9A9 |
| 100-328-20 | A1A6 |
| 100-328-21 | A8B7 |
| 100-328-22 | A9B6 |
| 100-328-23 | B5B7 |
| 100-328-24 | B5B6 |
| 100-328-29 | A9B7 |
| 100-328-30 | A1B2 |
| 100-328-31 | A1B6 |
| 100-328-41 | A1B7 |

**POLYCAST**

486 SHEPPARD ST  
WINNIPEG, MB  
CANADA R2X 2P8  
www.polycast.ca

**CONFIDENTIALITY**

THIS DRAWING ALONG WITH INFORMATION AND RELATED DOCUMENTS MAY NOT BE DUPLICATED OR RELEASED IN WHOLE OR IN PART WITHOUT WRITTEN PERMISSION AND IS THE EXCLUSIVE PROPERTY OF POLYCAST INTERNATIONAL

**PRODUCT SERIES**

**POI30A SERIES - 28kV/150kV BIL INSULATOR**

**SERIES NUMBER**

**100-328-00**