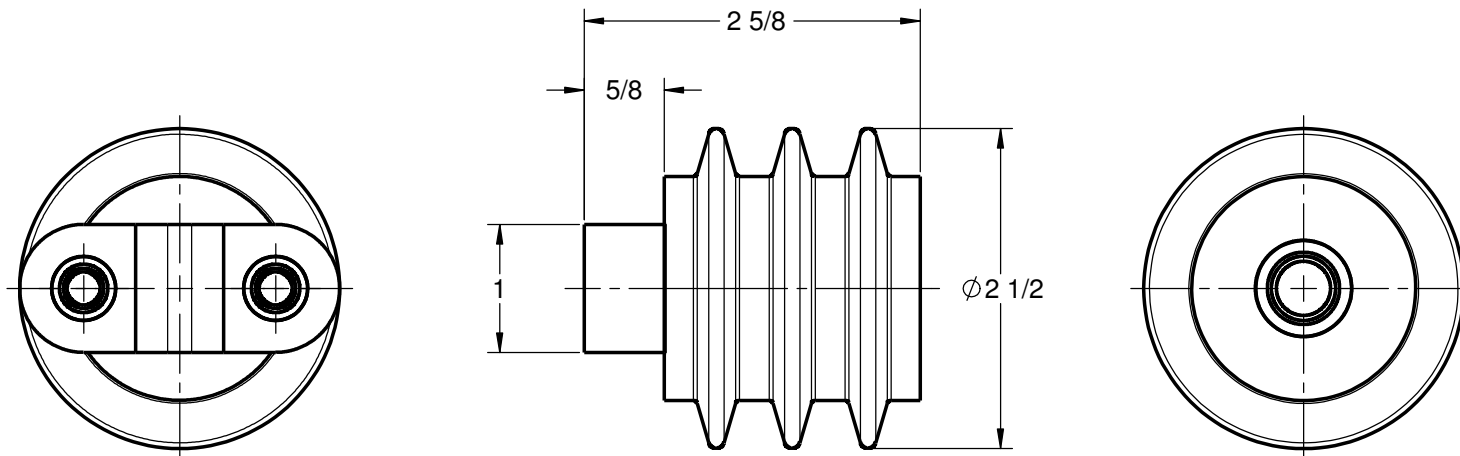




GENERAL NOTES AND SPECIFICATIONS

1. BASIC IMPULSE LEVEL: 45 kV
2. BODY MATERIAL: OUTDOOR CYCLOALIPHATIC EPOXY, GREY
3. INSERT MATERIAL: BRASS
4. WEIGHT: 0.6 lb(s)



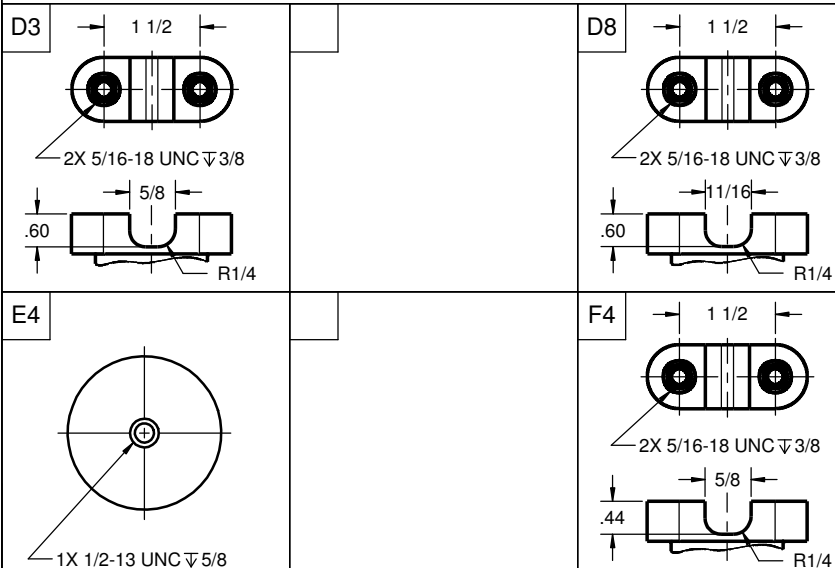
COMMON OPTIONS

CHOOSE TOP AND BOTTOM MOUNTING CONFIGURATION FROM TABLE BELOW
OTHER MOUNTING CONFIGURATIONS ARE ALSO AVAILABLE UPON REQUEST

SERIES ITEM	CONFIG
-------------	--------

100-802-48	F4E4
------------	------

STANDARD MOUNTING INSERT CONFIGURATION



100-802-63	D3E4
------------	------

100-802-68	D8E4
------------	------

POLYCAST

486 SHEPPARD ST
WINNIPEG, MB
CANADA R2X 2P8
www.polycast.ca

CONFIDENTIALITY

THIS DRAWING ALONG WITH INFORMATION AND RELATED DOCUMENTS MAY NOT BE DUPLICATED OR RELEASED IN WHOLE OR IN PART WITHOUT WRITTEN PERMISSION AND IS THE EXCLUSIVE PROPERTY OF POLYCAST INTERNATIONAL

PRODUCT SERIES

POICV SERIES - 2kV/45kV BIL
INSULATOR

SERIES NUMBER

100-802-00