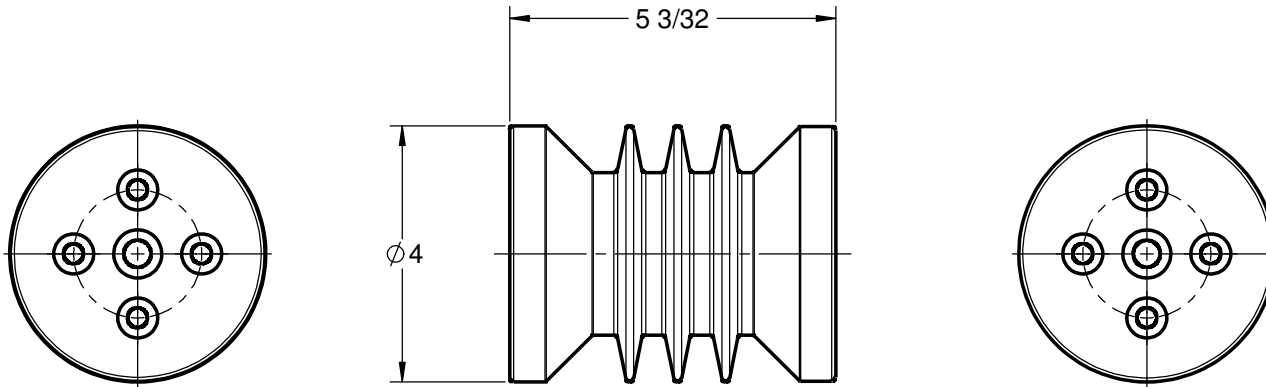


**GENERAL NOTES AND SPECIFICATIONS**

1. BASIC IMPULSE LEVEL: 95 kV
2. BODY MATERIAL: INDOOR BIS-A EPOXY, RED
3. INSERT MATERIAL: ZINC PLATED STEEL
4. WEIGHT: 3 lb(s)

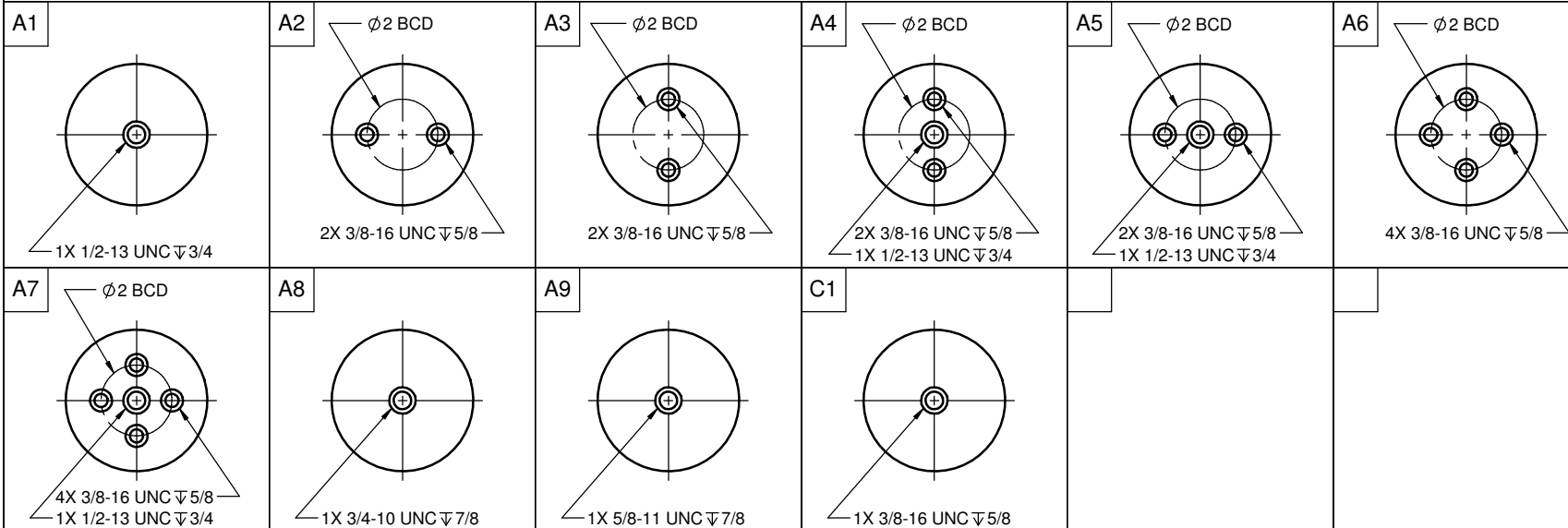


**COMMON OPTIONS**

CHOOSE TOP AND BOTTOM MOUNTING CONFIGURATION FROM TABLE BELOW  
OTHER MOUNTING CONFIGURATIONS ARE ALSO AVAILABLE UPON REQUEST

SERIES ITEM	CONFIG
105-212-01	A1A1
105-212-02	A1A2
105-212-03	A2A2
105-212-04	A2A3
105-212-05	A2A6
105-212-06	A4A4
105-212-07	A4A5
105-212-08	A6A6
105-212-09	A7A7
105-212-10	A9A9
105-212-11	A6A8
105-212-12	A2A9
105-212-13	A1A8
105-212-14	A2A7
105-212-15	A8A8
105-212-16	A6A9
105-212-18	A1A6
105-212-19	A4A6
105-212-21	A8A9
105-212-22	A2A4
105-212-28	A4A9
105-212-30	A1A7
105-212-31	A4A7
105-212-32	A2C1
105-212-39	A6A7
105-212-41	C1C1

**STANDARD MOUNTING INSERT CONFIGURATION**



**POLYCAST**

486 SHEPPARD ST  
WINNIPEG, MB  
CANADA R2X 2P8  
www.polycast.ca

**CONFIDENTIALITY**

THIS DRAWING ALONG WITH INFORMATION AND RELATED DOCUMENTS MAY NOT BE DUPLICATED OR RELEASED IN WHOLE OR IN PART WITHOUT WRITTEN PERMISSION AND IS THE EXCLUSIVE PROPERTY OF POLYCAST INTERNATIONAL

**PRODUCT SERIES**

**PII20A SERIES - 12kV/95kV BIL INSULATOR**

**SERIES NUMBER**

**105-212-00**