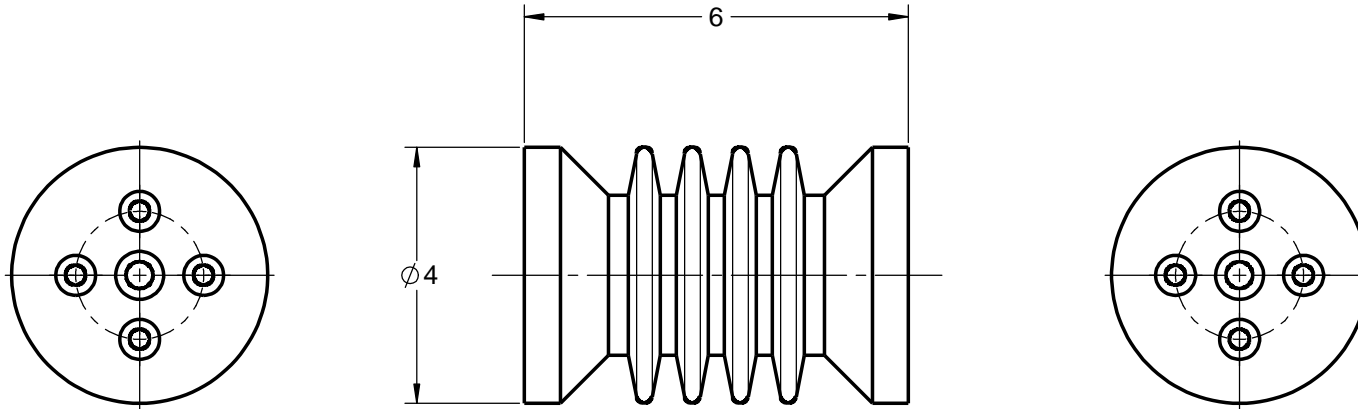


**GENERAL NOTES AND SPECIFICATIONS**

1. BASIC IMPULSE LEVEL: 95 kV
2. BODY MATERIAL: INDOOR BIS-A EPOXY, RED
3. INSERT MATERIAL: ZINC PLATED STEEL
4. WEIGHT: 4 lb(s)

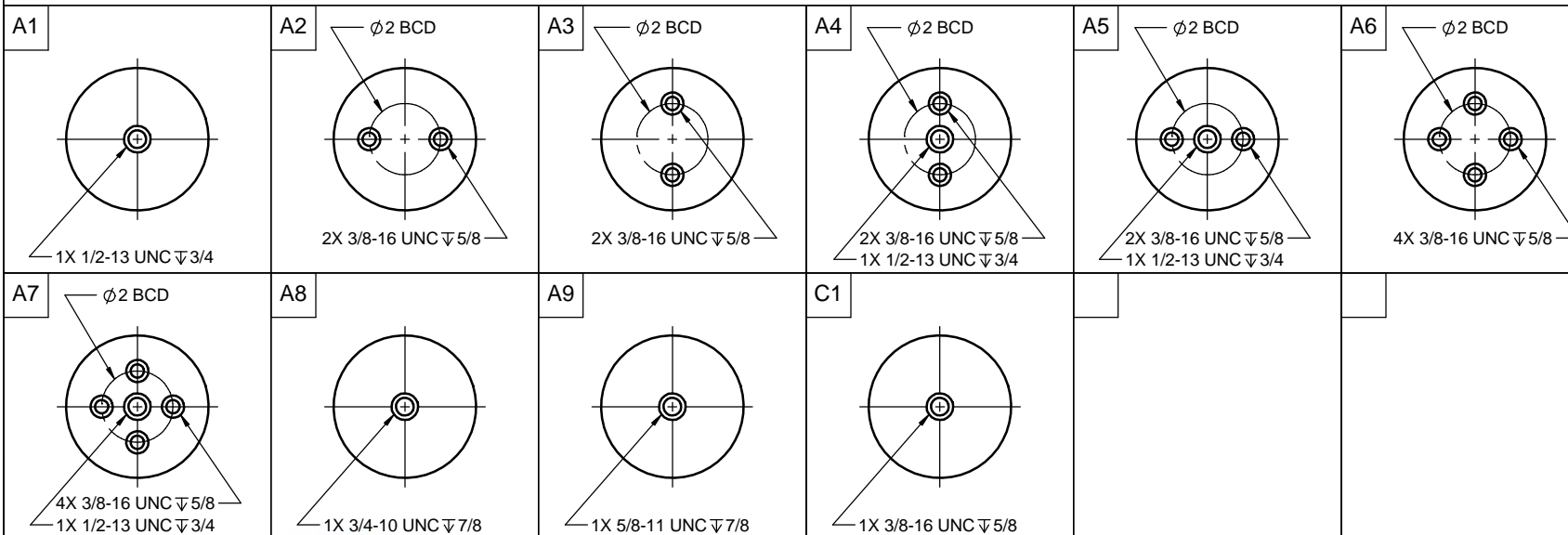


**COMMON OPTIONS**

CHOOSE TOP AND BOTTOM MOUNTING CONFIGURATION FROM TABLE BELOW  
OTHER MOUNTING CONFIGURATIONS ARE ALSO AVAILABLE UPON REQUEST

SERIES ITEM	CONFIG
105-215-01	A1A1
105-215-02	A1A2
105-215-03	A2A2
105-215-04	A2A3
105-215-05	A2A6
105-215-06	A4A4
105-215-07	A4A5
105-215-08	A6A6
105-215-09	A7A7
105-215-10	A9A9
105-215-11	A6A8
105-215-12	A2A9
105-215-13	A1A8

**STANDARD MOUNTING INSERT CONFIGURATION**



105-215-14	A2A7
105-215-15	A8A8
105-215-16	A6A9
105-215-18	A1A6
105-215-19	A4A6
105-215-21	A8A9
105-215-22	A2A4
105-215-28	A4A9
105-215-30	A1A7
105-215-31	A4A7
105-215-32	A2C1
105-215-39	A6A7
105-215-41	C1C1