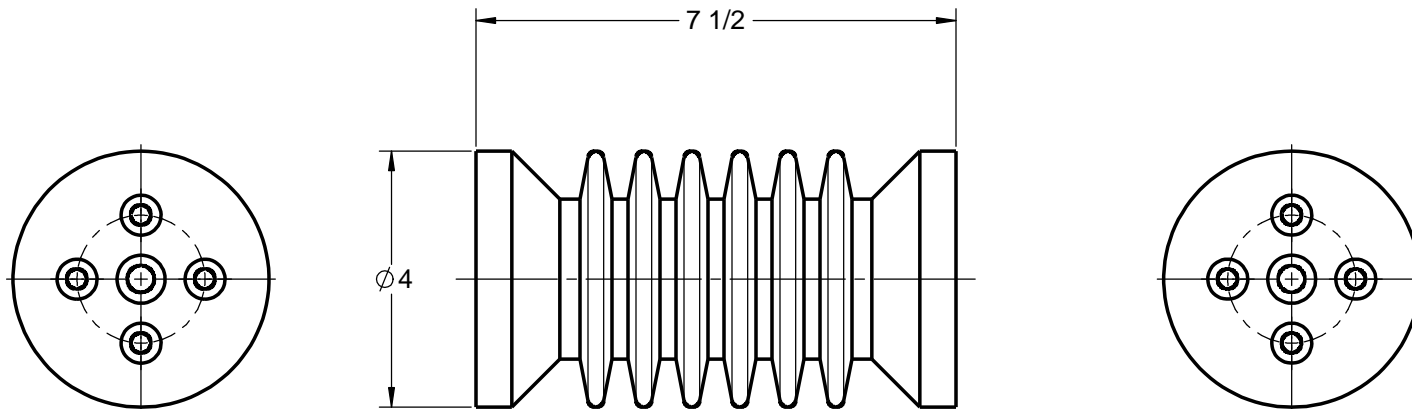


**GENERAL NOTES AND SPECIFICATIONS**

1. BASIC IMPULSE LEVEL: 110 kV
2. BODY MATERIAL: INDOOR BIS-A EPOXY, RED
3. INSERT MATERIAL: ZINC PLATED STEEL
4. WEIGHT: 5 lb(s)

**COMMON OPTIONS**

CHOOSE TOP AND BOTTOM MOUNTING CONFIGURATION FROM TABLE BELOW  
 OTHER MOUNTING CONFIGURATIONS ARE ALSO AVAILABLE UPON REQUEST

SERIES ITEM	CONFIG
105-218-01	A1A1
105-218-02	A1A2
105-218-03	A2A2
105-218-04	A2A3
105-218-05	A2A6
105-218-06	A4A4
105-218-07	A4A5
105-218-08	A6A6
105-218-09	A7A7
105-218-10	A9A9
105-218-11	A6A8
105-218-12	A2A9
105-218-13	A1A8

**STANDARD MOUNTING INSERT CONFIGURATION**

<b>A1</b> 	<b>A2</b>  2X 3/8-16 UNC 5/8	<b>A3</b>  2X 3/8-16 UNC 5/8	<b>A4</b>  2X 3/8-16 UNC 5/8 1X 1/2-13 UNC 3/4	<b>A5</b>  2X 3/8-16 UNC 5/8 1X 1/2-13 UNC 3/4	<b>A6</b>  4X 3/8-16 UNC 5/8
<b>A7</b>  4X 3/8-16 UNC 5/8 1X 1/2-13 UNC 3/4	<b>A8</b> 	<b>A9</b> 	<b>C1</b> 		

105-218-14	A2A7
105-218-15	A8A8
105-218-16	A6A9
105-218-18	A1A6
105-218-23	A2A8
105-218-30	A1A7
105-218-31	A4A7
105-218-34	A1A9
105-218-39	A6A7
105-218-41	C1C1