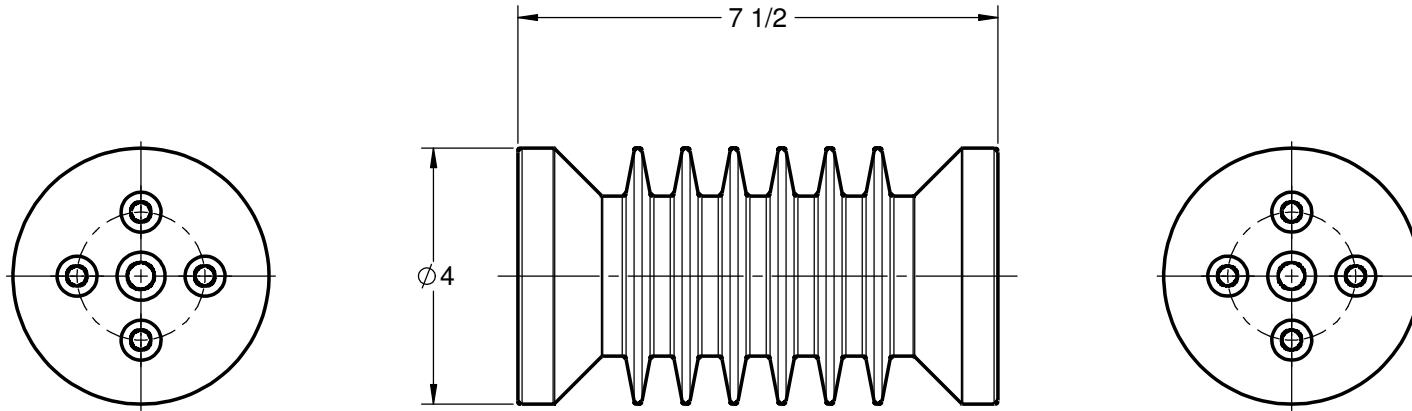


GENERAL NOTES AND SPECIFICATIONS

1. BASIC IMPULSE LEVEL: 110 kV
2. BODY MATERIAL: INDOOR BIS-A EPOXY, RED
3. INSERT MATERIAL: ZINC PLATED STEEL
4. WEIGHT: 4 lb(s)

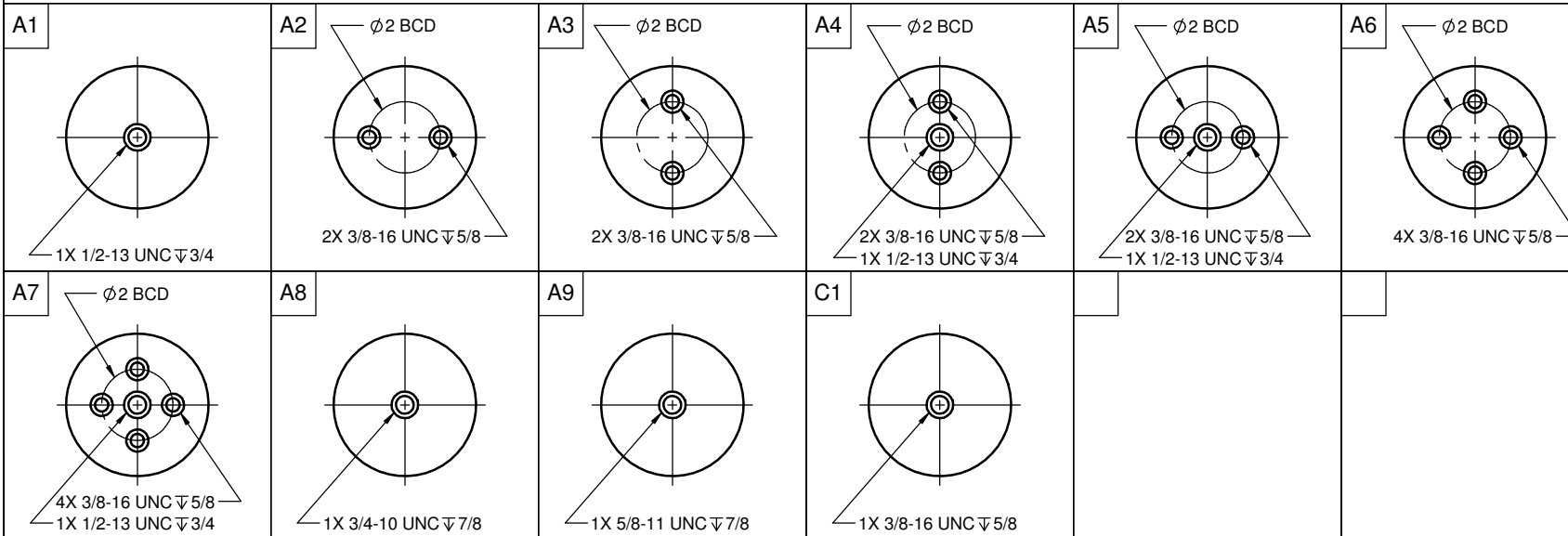


COMMON OPTIONS

CHOOSE TOP AND BOTTOM MOUNTING CONFIGURATION FROM TABLE BELOW
OTHER MOUNTING CONFIGURATIONS ARE ALSO AVAILABLE UPON REQUEST

SERIES ITEM	CONFIG
105-218-01	A1A1
105-218-02	A1A2
105-218-03	A2A2
105-218-04	A2A3
105-218-05	A2A6
105-218-06	A4A4
105-218-07	A4A5
105-218-08	A6A6
105-218-09	A7A7
105-218-10	A9A9
105-218-11	A6A8
105-218-12	A2A9
105-218-13	A1A8

STANDARD MOUNTING INSERT CONFIGURATION



105-218-14	A2A7
105-218-15	A8A8
105-218-16	A6A9
105-218-18	A1A6
105-218-19	A4A6
105-218-21	A8A9
105-218-22	A2A4
105-218-28	A4A9
105-218-30	A1A7
105-218-31	A4A7
105-218-32	A2C1
105-218-39	A6A7
105-218-41	C1C1