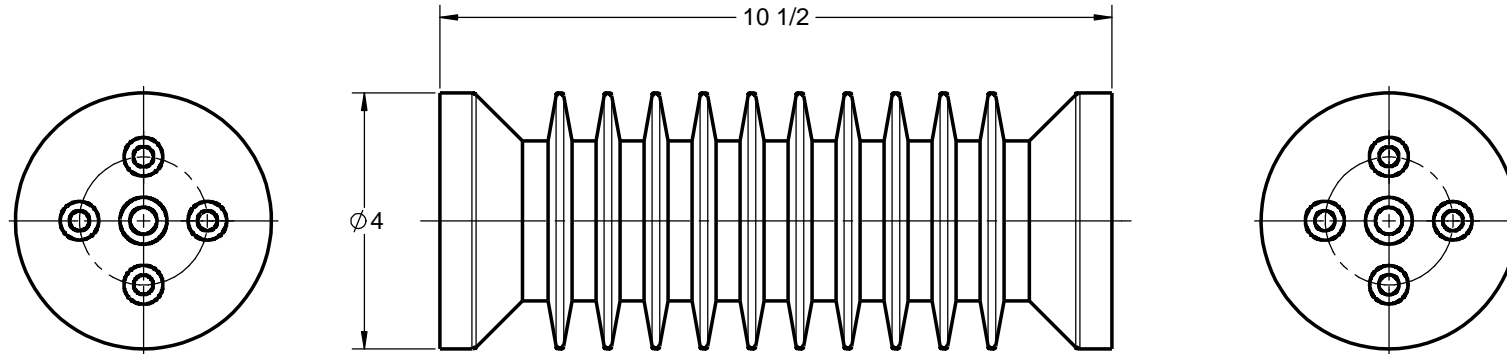


GENERAL NOTES AND SPECIFICATIONS

1. BASIC IMPULSE LEVEL: 150 kV
2. BODY MATERIAL: INDOOR BIS-A EPOXY, RED
3. INSERT MATERIAL: ZINC PLATED STEEL
4. APPROX. WEIGHT: 6 lb(s)



COMMON OPTIONS

CHOOSE TOP AND BOTTOM MOUNTING CONFIGURATION FROM TABLE BELOW
OTHER MOUNTING CONFIGURATIONS ARE ALSO AVAILABLE UPON REQUEST

SERIES ITEM	CONFIG
105-228-01	A1A1
105-228-02	A1A2
105-228-03	A2A2
105-228-04	A2A3
105-228-05	A2A6
105-228-06	A4A4
105-228-07	A4A5
105-228-08	A6A6
105-228-09	A7A7
105-228-10	A9A9
105-228-11	A6A8
105-228-12	A2A9
105-228-13	A1A8
105-228-14	A2A7
105-228-15	A8A8
105-228-16	A6A9
105-228-18	A1A6
105-228-19	A4A6
105-228-20	A1A4
105-228-41	C1C1
105-228-105	A2A5

STANDARD MOUNTING INSERT CONFIGURATIONS

A1 1X 1/2-13 UNC 5/8	A2 2X 3/8-16 UNC 5/8 2 BCD	A3 2X 3/8-16 UNC 5/8 2 BCD	A4 2X 3/8-16 UNC 5/8 1X 1/2-13 UNC 5/8 2 BCD	A5 2X 3/8-16 UNC 5/8 1X 1/2-13 UNC 5/8 2 BCD	A6 4X 3/8-16 UNC 5/8 2 BCD
A7 4X 3/8-16 UNC 5/8 1X 1/2-13 UNC 5/8 2 BCD	A8 1X 3/4-10 UNC 7/8	A9 1X 5/8-11 UNC 7/8	C1 1X 3/8-16 UNC 5/8		

POLYCAST 486 SHEPPARD ST
WINNIPEG, MB
CANADA R2X 2P8
www.polycast.ca

CONFIDENTIALITY
THIS DRAWING ALONG WITH INFORMATION AND RELATED DOCUMENTS MAY NOT BE DUPLICATED OR RELEASED IN WHOLE OR IN PART WITHOUT WRITTEN PERMISSION AND IS THE EXCLUSIVE PROPERTY OF POLYCAST INTERNATIONAL

CATALOG REFERENCE
PII20A SERIES - 28kV/150kV BIL
INSULATOR

SERIES NUMBER
105-228-00