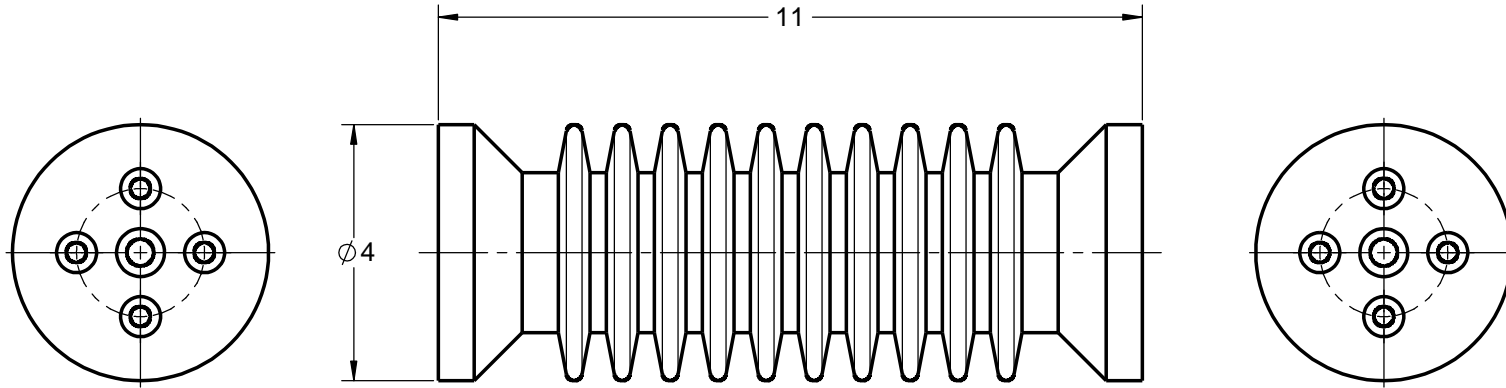


GENERAL NOTES AND SPECIFICATIONS

1. BASIC IMPULSE LEVEL: 150 kV
2. BODY MATERIAL: INDOOR BIS-A EPOXY, RED
3. INSERT MATERIAL: ZINC PLATED STEEL
4. WEIGHT: 6 lb(s)

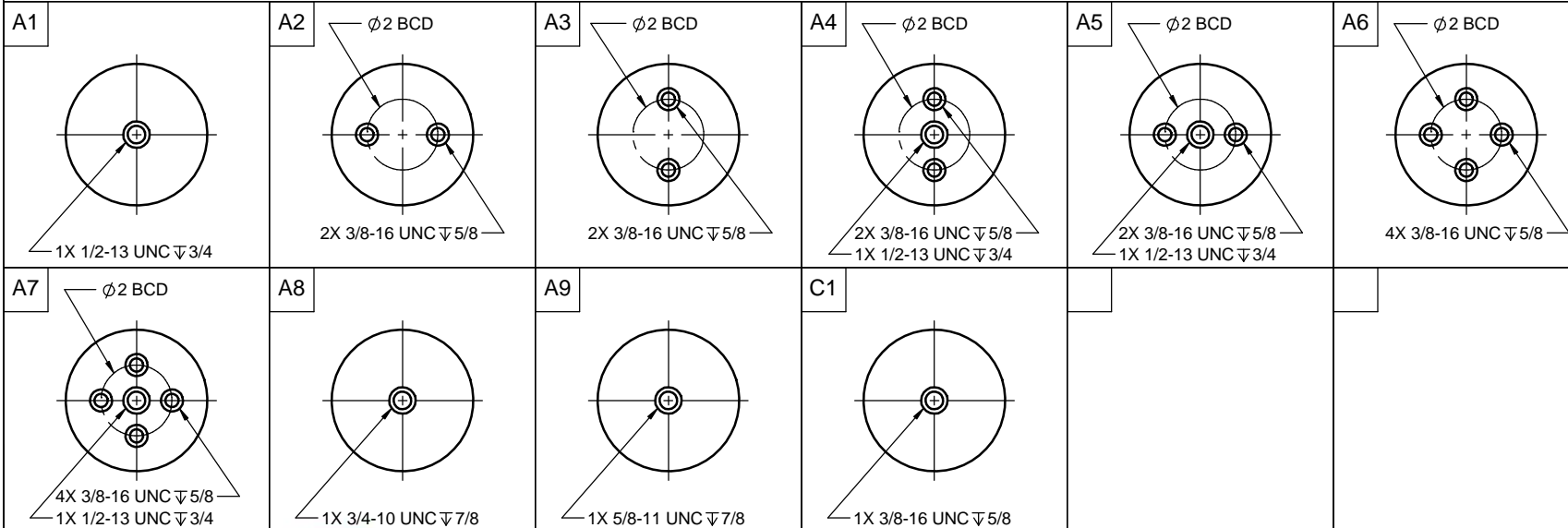


COMMON OPTIONS

CHOOSE TOP AND BOTTOM MOUNTING CONFIGURATION FROM TABLE BELOW
OTHER MOUNTING CONFIGURATIONS ARE ALSO AVAILABLE UPON REQUEST

SERIES ITEM	CONFIG
105-231-01	A1A1
105-231-02	A1A2
105-231-03	A2A2
105-231-04	A2A3
105-231-05	A2A6
105-231-06	A4A4
105-231-07	A4A5
105-231-08	A6A6
105-231-09	A7A7
105-231-10	A9A9
105-231-11	A6A8
105-231-12	A2A9
105-231-13	A1A8
105-231-14	A2A7
105-231-15	A8A8
105-231-16	A6A9
105-231-18	A1A6
105-231-22	A2A4
105-231-30	A1A7
105-231-34	A1A9

STANDARD MOUNTING INSERT CONFIGURATION



POLYCAST 486 SHEPPARD ST WINNIPEG, MB CANADA R2X 2P8 www.polycast.ca

CONFIDENTIALITY
THIS DRAWING ALONG WITH INFORMATION AND RELATED DOCUMENTS MAY NOT BE DUPLICATED OR RELEASED IN WHOLE OR IN PART WITHOUT WRITTEN PERMISSION AND IS THE EXCLUSIVE PROPERTY OF POLYCAST INTERNATIONAL

CATALOG REFERENCE
PII20A SERIES - 31kV/150kV BIL INSULATOR

SERIES NUMBER
105-231-00