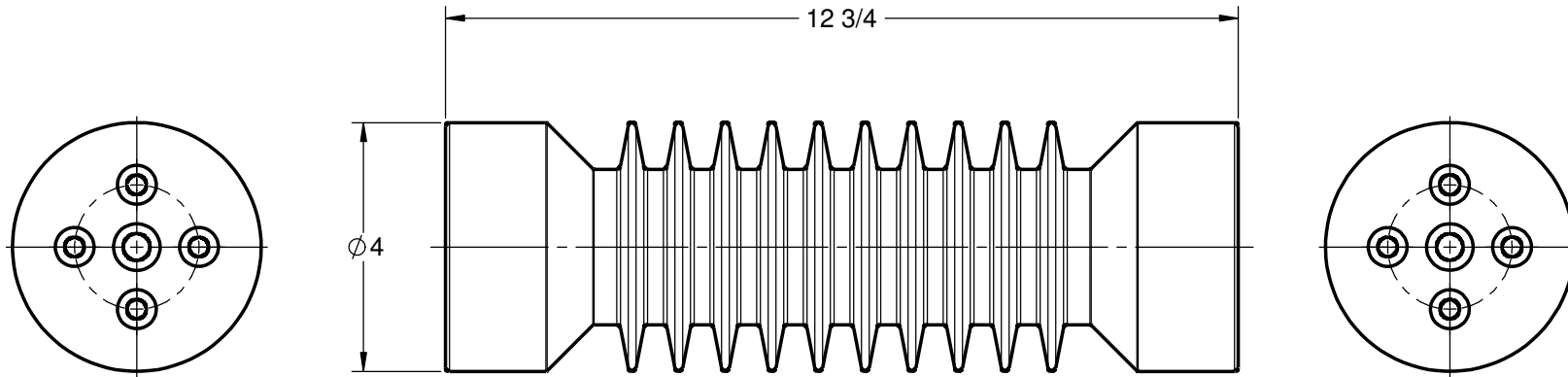


GENERAL NOTES AND SPECIFICATIONS

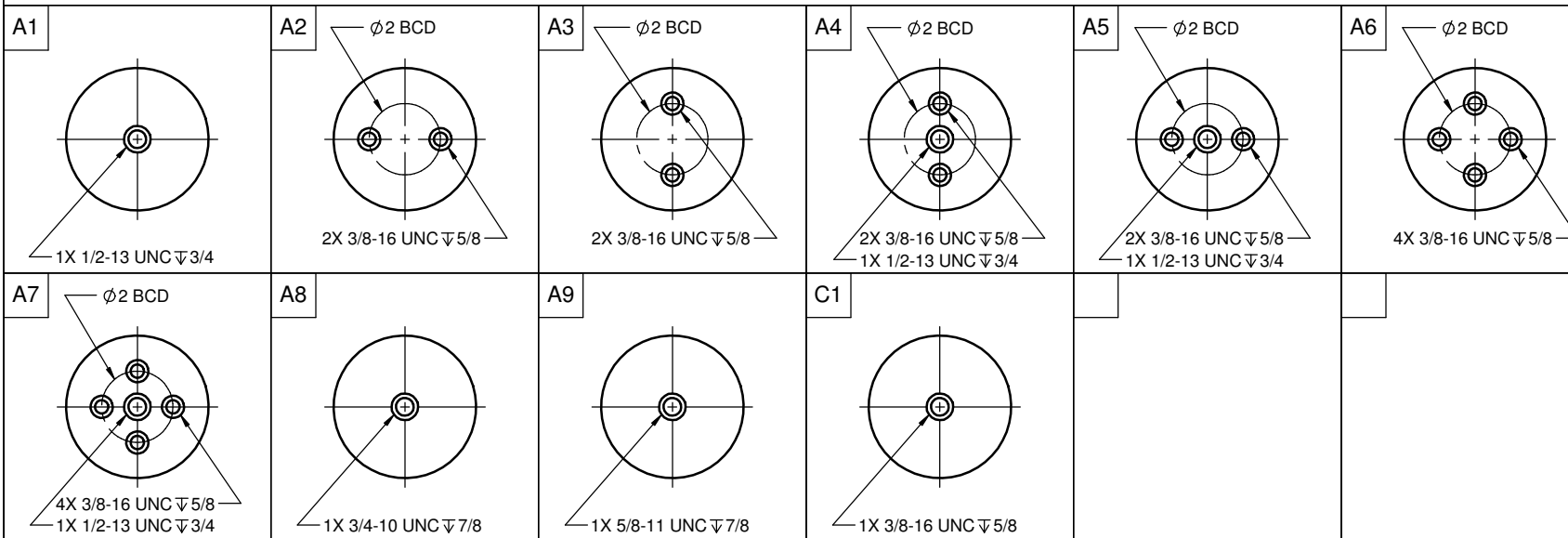
1. BASIC IMPULSE LEVEL: 170 kV
2. BODY MATERIAL: INDOOR BIS-A EPOXY, RED
3. INSERT MATERIAL: ZINC PLATED STEEL
4. WEIGHT: 8 lb(s)

COMMON OPTIONS

CHOOSE TOP AND BOTTOM MOUNTING CONFIGURATION FROM TABLE BELOW
 OTHER MOUNTING CONFIGURATIONS ARE ALSO AVAILABLE UPON REQUEST



STANDARD MOUNTING INSERT CONFIGURATION



SERIES ITEM	CONFIG
105-235-01	A1A1
105-235-02	A1A2
105-235-03	A2A2
105-235-04	A2A3
105-235-05	A2A6
105-235-06	A4A4
105-235-07	A4A5
105-235-08	A6A6
105-235-09	A7A7
105-235-10	A9A9
105-235-11	A6A8
105-235-12	A2A9
105-235-13	A1A8
105-235-14	A2A7
105-235-15	A8A8
105-235-16	A6A9
105-235-18	A1A6
105-235-19	A4A6
105-235-21	A8A9
105-235-22	A2A4
105-235-28	A4A9
105-235-30	A1A7
105-235-31	A4A7
105-235-32	A2C1
105-235-39	A6A7
105-235-41	C1C1