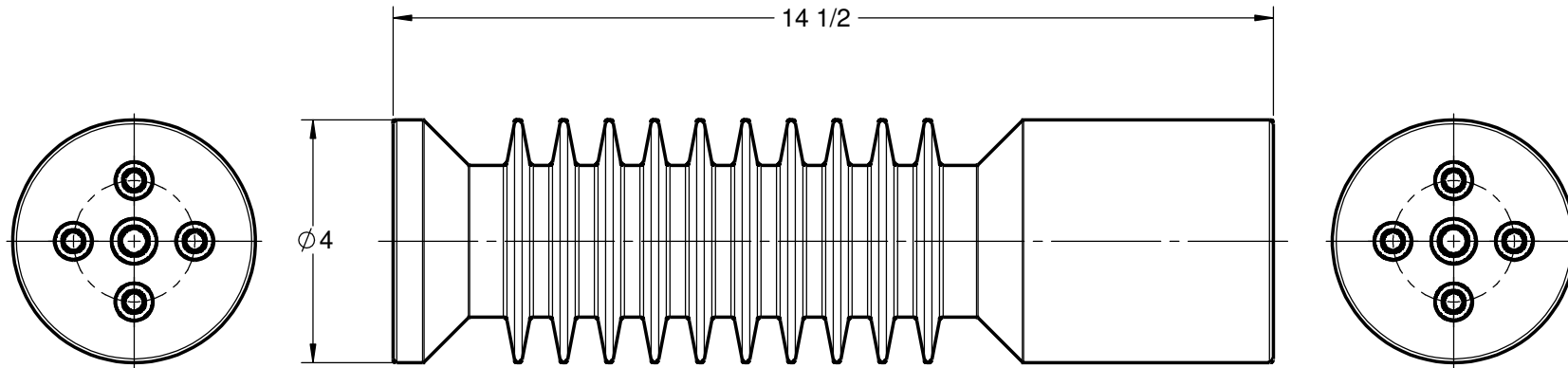


**GENERAL NOTES AND SPECIFICATIONS**

1. BASIC IMPULSE LEVEL: 200 kV
2. BODY MATERIAL: INDOOR BIS-A EPOXY, RED
3. INSERT MATERIAL: ZINC PLATED STEEL
4. WEIGHT: 9 lb(s)

**COMMON OPTIONS**

CHOOSE TOP AND BOTTOM MOUNTING CONFIGURATION FROM TABLE BELOW  
OTHER MOUNTING CONFIGURATIONS ARE ALSO AVAILABLE UPON REQUEST



SERIES ITEM	CONFIG
105-238-01	A1A1
105-238-02	A1A2
105-238-03	A2A2
105-238-04	A2A3
105-238-05	A2A6
105-238-06	A4A4
105-238-07	A4A5
105-238-08	A6A6
105-238-09	A7A7
105-238-10	A9A9
105-238-11	A6A8
105-238-12	A2A9
105-238-13	A1A8

**STANDARD MOUNTING INSERT CONFIGURATION**

<b>A1</b> 	<b>A2</b>  2X 3/8-16 UNC 5/8	<b>A3</b>  2X 3/8-16 UNC 5/8	<b>A4</b>  2X 3/8-16 UNC 5/8 1X 1/2-13 UNC 3/4	<b>A5</b>  2X 3/8-16 UNC 5/8 1X 1/2-13 UNC 3/4	<b>A6</b>  4X 3/8-16 UNC 5/8
<b>A7</b>  4X 3/8-16 UNC 5/8 1X 1/2-13 UNC 3/4	<b>A8</b>  1X 3/4-10 UNC 7/8	<b>A9</b>  1X 5/8-11 UNC 7/8	<b>C1</b>  1X 3/8-16 UNC 5/8		

105-238-14	A2A7
105-238-15	A8A8
105-238-16	A6A9
105-238-18	A1A6
105-238-19	A4A6
105-238-21	A8A9
105-238-22	A2A4
105-238-28	A4A9
105-238-30	A1A7
105-238-31	A4A7
105-238-32	A2C1
105-238-39	A6A7
105-238-41	C1C1

**POLYCAST**

486 SHEPPARD ST  
WINNIPEG, MB  
CANADA R2X 2P8  
www.polycast.ca

**CONFIDENTIALITY**

THIS DRAWING ALONG WITH INFORMATION AND RELATED DOCUMENTS MAY NOT BE DUPLICATED OR RELEASED IN WHOLE OR IN PART WITHOUT WRITTEN PERMISSION AND IS THE EXCLUSIVE PROPERTY OF POLYCAST INTERNATIONAL

**PRODUCT SERIES**

**PII20A SERIES - 38kV/200kV BIL INSULATOR**

**SERIES NUMBER**

**105-238-00**