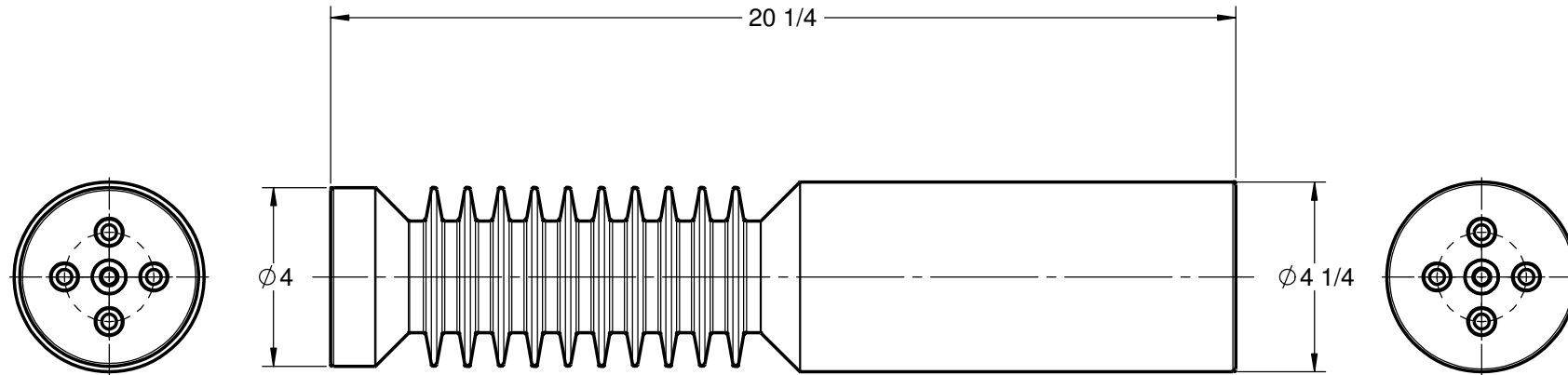


**GENERAL NOTES AND SPECIFICATIONS**

1. BASIC IMPULSE LEVEL: 250 kV
2. BODY MATERIAL: INDOOR BIS-A EPOXY, RED
3. INSERT MATERIAL: ZINC PLATED STEEL
4. WEIGHT: 15 lb(s)

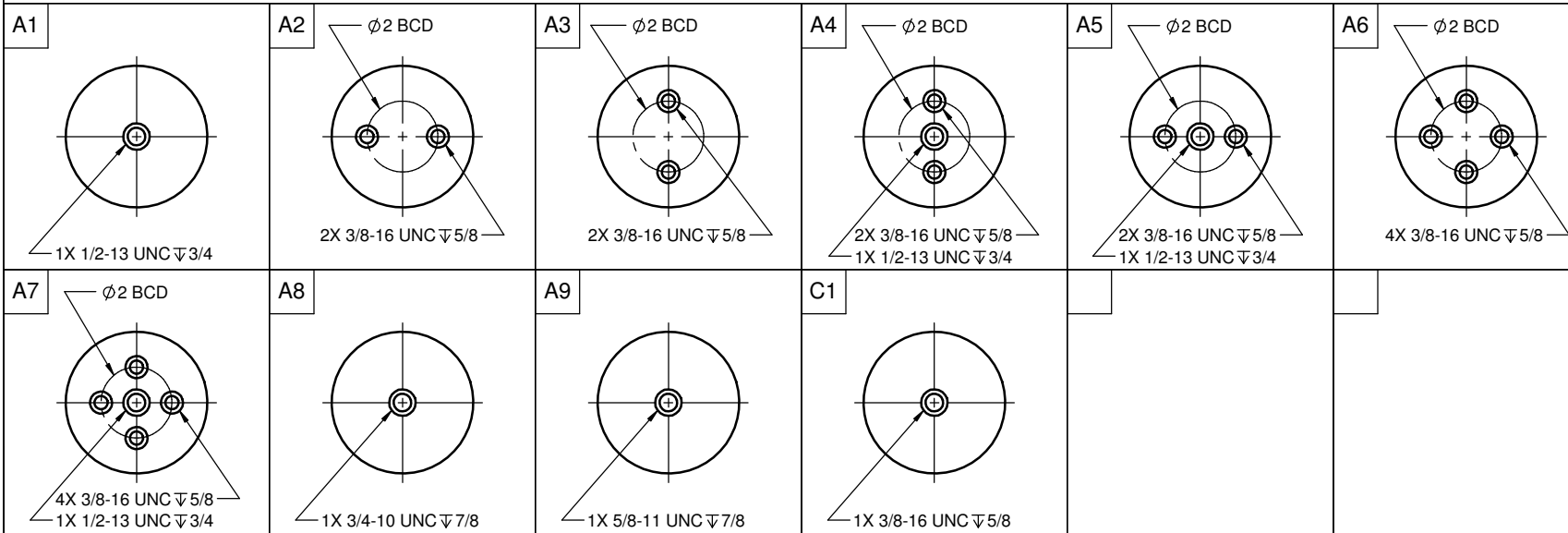
**COMMON OPTIONS**

CHOOSE TOP AND BOTTOM MOUNTING CONFIGURATION FROM TABLE BELOW  
OTHER MOUNTING CONFIGURATIONS ARE ALSO AVAILABLE UPON REQUEST



SERIES ITEM	CONFIG
105-246-01	A1A1
105-246-02	A1A2
105-246-03	A2A2
105-246-04	A2A3
105-246-05	A2A6
105-246-06	A4A4
105-246-07	A4A5
105-246-08	A6A6
105-246-09	A7A7
105-246-10	A9A9
105-246-11	A6A8
105-246-12	A2A9
105-246-13	A1A8

**STANDARD MOUNTING INSERT CONFIGURATION**



105-246-14	A2A7
105-246-15	A8A8
105-246-16	A6A9
105-246-18	A1A6
105-246-19	A4A6
105-246-21	A8A9
105-246-22	A2A4
105-246-28	A4A9
105-246-30	A1A7
105-246-31	A4A7
105-246-32	A2C1
105-246-39	A6A7
105-246-41	C1C1

**POLYCAST**

486 SHEPPARD ST  
WINNIPEG, MB  
CANADA R2X 2P8  
www.polycast.ca

**CONFIDENTIALITY**

THIS DRAWING ALONG WITH INFORMATION AND RELATED DOCUMENTS MAY NOT BE DUPLICATED OR RELEASED IN WHOLE OR IN PART WITHOUT WRITTEN PERMISSION AND IS THE EXCLUSIVE PROPERTY OF POLYCAST INTERNATIONAL

**PRODUCT SERIES**

**PII20A SERIES - 46kV/250kV BIL INSULATOR**

**SERIES NUMBER**

**105-246-00**