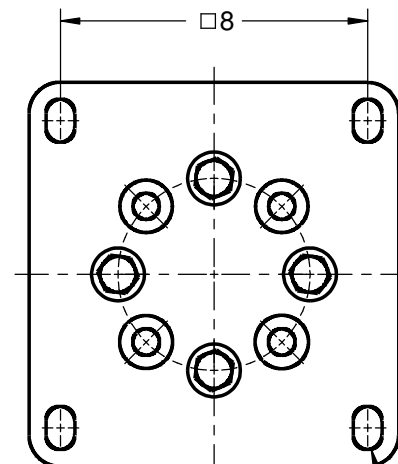
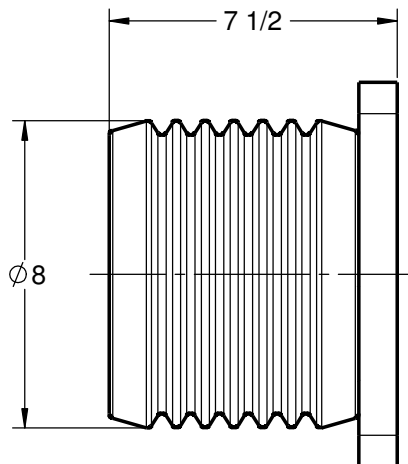
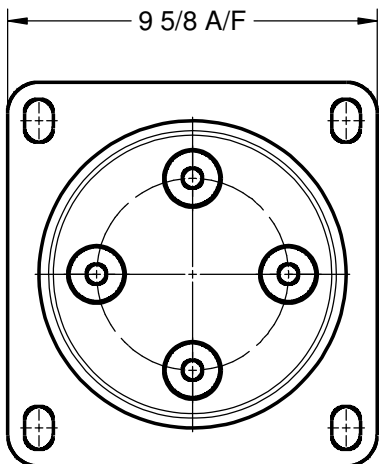




GENERAL NOTES AND SPECIFICATIONS

- 1. BASIC IMPULSE LEVEL: 95 kV
- 2. BODY MATERIAL: INDOOR BIS-A EPOXY, RED
- 3. INSERT MATERIAL: ALUMINUM
- 4. WEIGHT: 28 lb(s)

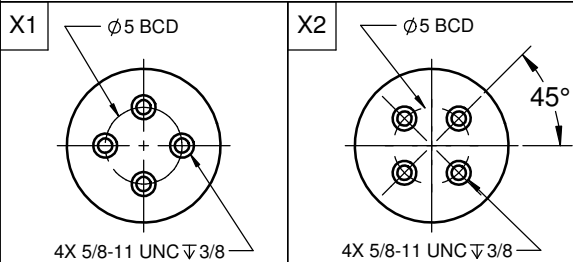


COMMON OPTIONS

CHOOSE TOP AND BOTTOM MOUNTING CONFIGURATION FROM TABLE BELOW
 OTHER MOUNTING CONFIGURATIONS ARE ALSO AVAILABLE UPON REQUEST

SERIES ITEM	CONFIG
105-565-01	X1
105-565-02	X2

STANDARD MOUNTING INSERT CONFIGURATION



POLYCAST®
 486 SHEPPARD ST
 WINNIPEG, MB
 CANADA R2X 2P8
 www.polycast.ca

CONFIDENTIALITY
 THIS DRAWING ALONG WITH INFORMATION AND RELATED DOCUMENTS MAY NOT BE DUPLICATED OR RELEASED IN WHOLE OR IN PART WITHOUT WRITTEN PERMISSION AND IS THE EXCLUSIVE PROPERTY OF POLYCAST INTERNATIONAL

PRODUCT SERIES
 PII50B SERIES - 15kV/95kV BIL
 INSULATOR

SERIES NUMBER
 105-565-00